

Pan Asia Centre
泛亞中心



137 Wai Yip Street 偉業街137號

KWUN TONG · 觀塘

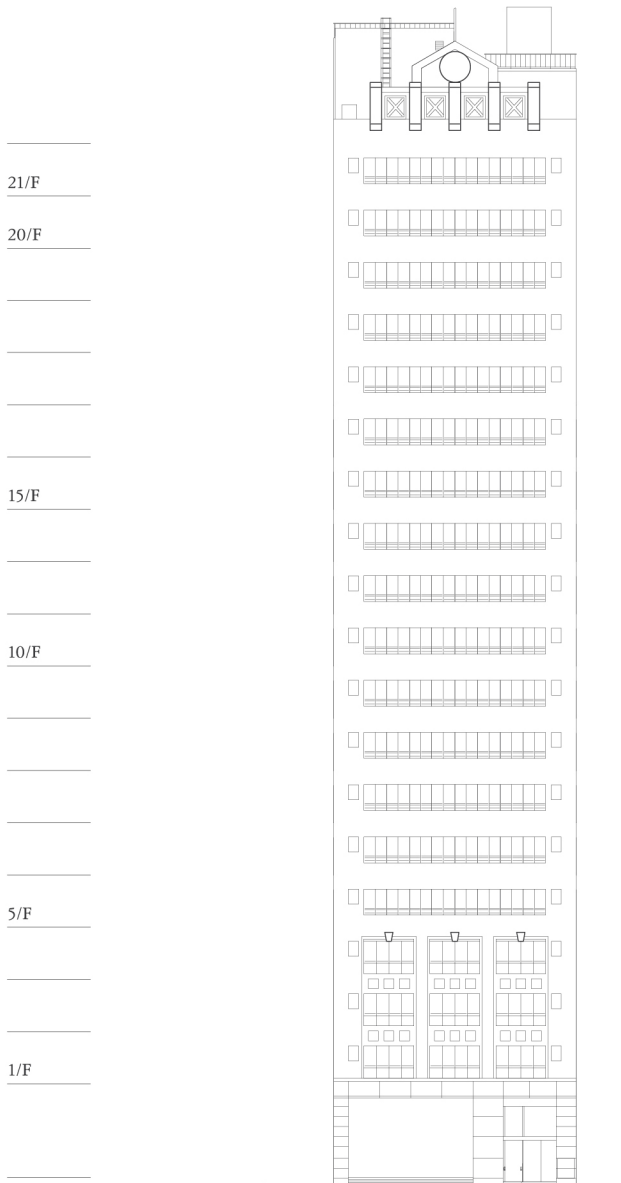
泛亞中心
PAN ASIA

Pan Asia Centre

泛亞中心

- Situated at the commercial hub with a mere 5-minute walk to Ngau Tau Kok Station (Kwun Tong Line) and connected to other parts of the city via an extensive public transport network
 - Extensive floor plates measuring 3,668 sq.ft. and column-free designs that enable flexible and efficient partitioning
 - Professional property management and 24-hour security services
-
- 位處商業中心，港鐵觀塘線牛頭角站僅信步5分鐘，公共交通網絡四通八達，接通全城各處
 - 每層單位面積達3,668平方呎，無柱式設計，間隔靈活實用
 - 專業物業管理及24小時保安服務





Wai Yip Street Elevation
偉業街立面

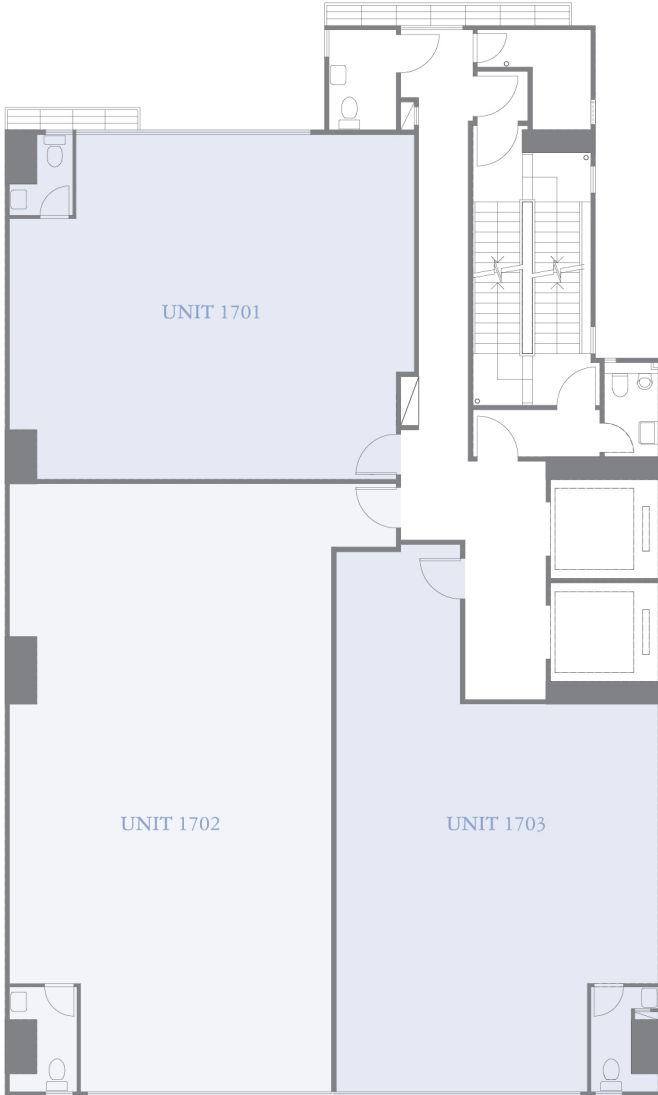
Building Information and Specifications

大廈資訊及建築規格

Parking Spaces 停車位	: 4 Private Cars, 1 Light Goods Vehicle, 1 Heavy Goods Vehicle 4私家車, 1輕型貨車, 1重型貨車
No. of Storeys 樓層	: 19
Typical Floor Plate 每層樓面面積	: 3,668 sq. ft. 3,668 平方呎
Headroom of Carpark Entrance 停車場入口高度	: 4.1m 4.1米
Floor-to-floor Height 樓底高度	: 18'6" (G/F 地下) 10'4" (1-21/F 1-21樓)
No. of Lifts 升降機數目	: 2 Lifts 2升降機
Cargo Lift Access Size 載貨升降機入口呎吋	: 100 cm (W) x 210 cm (H) 100厘米(闊) x 210厘米(高)
Cargo Lift Internal Size 載貨升降機內部呎吋	: 154 cm (W) x 229 cm (H) x 156 cm (D) 154厘米(闊) x 229厘米(高) x 156厘米(深)
Max. Load of Cargo Lift 載貨升降機最高負重	: 1,150 kg 1,150 公斤
Floor Loading 樓面負重量	: 62.6lb / sq. ft. (1-21/F) 每平方呎62.6磅(1-21樓)
Air Conditioning System 冷氣系統	: Individual Air Conditioning 獨立冷氣
Fire Services System 消防系統	: Automatic Sprinkler System and Fire Alarm System 自動灑水系統及消防警報系統
Security 保安系統	: CCTV Surveillance 閉路電視監控系統



17/F
17樓



Wai Yip Street 偉業街





 Restaurants
食肆

 Shopping Mall
購物商場

 Pier
碼頭

Leasing Hotline 租務熱線

8338 1338

www.sino-offices.com

leasingcs@sino.com



 SINO GROUP
信和集團

All information and photos are for reference only. We take no responsibility for the contents of this brochure/leaflet/promotional material, make no representation as to its accuracy or completeness and, to the extent permitted by law, expressly disclaim any liability whatsoever for any loss howsoever arising from or in reliance upon the whole or any part of the contents thereof. 所有資料及圖片僅供參考。本公司對本冊子/單張/宣傳資料之內容概不負責，對其準確性或完整性亦不發表任何聲明，並明確表示，在法律允許的範圍內，概不對因本冊子/單張/宣傳資料全部或任何部分內容而產生或因依賴該等內容而引致之任何損失承擔任何責任。